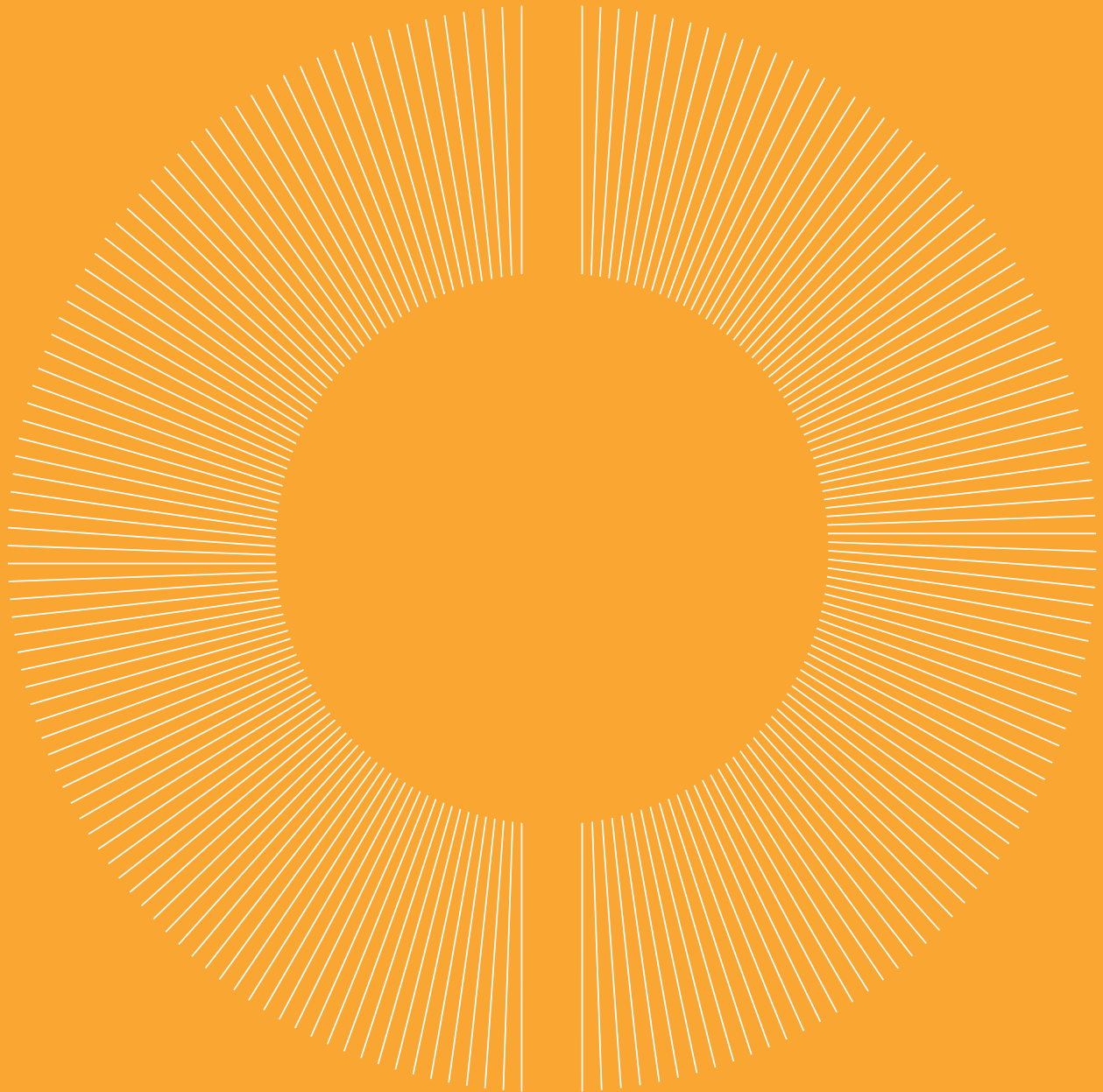


Schroder International Selection Fund Global Climate Change Equity



Schroder ISF* Global Climate Change Equity is an actively managed, global equity fund capturing opportunities around the world by investing in companies we believe will be positively impacted by efforts to transition to a low carbon economy.

Strategic Capabilities



Alpha Equity

Targeting higher active equity



Sustainability

Sustainably delivering long-term value in a fast-changing world

Accreditation



Source: Schroders, April 2019, see disclaimer for explanation or visit www.schroders.lu/sustainabilityaccreditation

“
We exclude any company that generates significant revenues from fossil fuels, coal, gas, or oil.
”

Why invest?

The impact of global warming on the economy and companies will be far reaching and profound. We believe that companies that recognise the threats and embrace the challenges early, or that form part of the solution to the problems linked to climate change, will ultimately outperform the broader market.

Highlights

We've been doing this a long time

Schroder ISF Global Climate Change Equity was one of the first in its field and has been successfully running since 2007.

Looking beyond the obvious

Climate change will impact every company, so we don't limit ourselves to particular sectors. This way we can build a diversified portfolio of companies, all linked to climate change. We do, however, exclude companies with ownership of fossil fuel reserves.

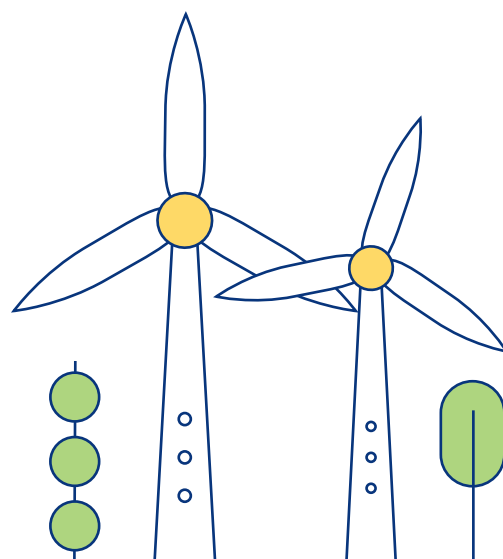
Diving deeper

We analyse how climate change will affect revenue, margins, running costs, valuations and the impact on the entire value chain to help build a complete picture of how companies will adapt and, ultimately, their return potential.

A team of climate change specialists

Our team has investment experience in sectors like technology, energy, utilities, materials and automotive – exactly the ones set to be affected by climate change.

Our sustainability experts understand the science of climate change and how it links to economic trends, while our data scientists provide us with unique insights that others may not be able to spot.



Investment process

Universe creation

Our investment universe comprises of those companies whose long-term outlook we believe will be positively impacted by efforts to mitigate and adapt to climate change.

This centers around 5 key themes; clean energy, sustainable transport, environmental resources, low carbon leader and energy efficiency.

Stock selection

The Global Climate Change team works with Schrodgers' broader equity research team and takes a bottom-up research approach to stock selection.

We also utilise ESG research from our Sustainability team and data science capabilities from our Data Insights Unit.

Portfolio construction

The portfolio comprises of 40-70 stocks which are weighted based on our risk-adjusted return expectations.

Stocks with a higher relative upside, lower fundamental risk profile and higher liquidity will receive higher active weights in the portfolio.

Ongoing stewardship

We actively engage with companies in our portfolio to encourage transparent disclosure and ESG improvements.

We evaluate voting issues on our investments and vote on them in line with our fiduciary responsibilities to clients. We vote on all resolutions unless we are restricted from doing so.

Key information

ISIN code LU0302445910

Bloomberg code SCGLLAA:LX

Fund launch date 29 June 2007

Fund base currency USD

All information in the table above is for the A Accumulation share class, for further share class information please see the prospectus.

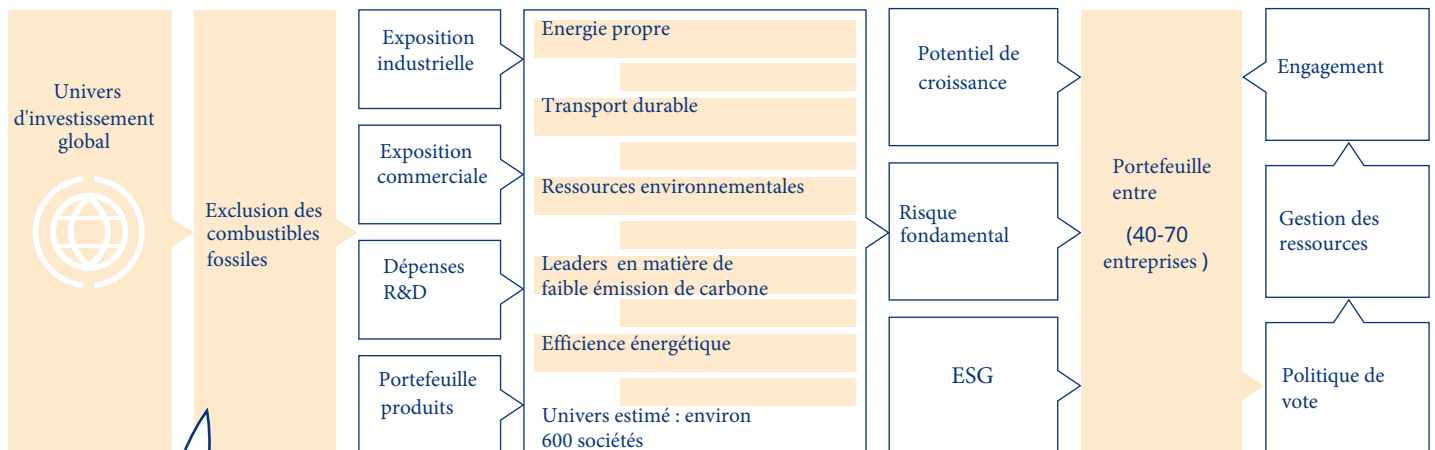
Schrodgers' awards



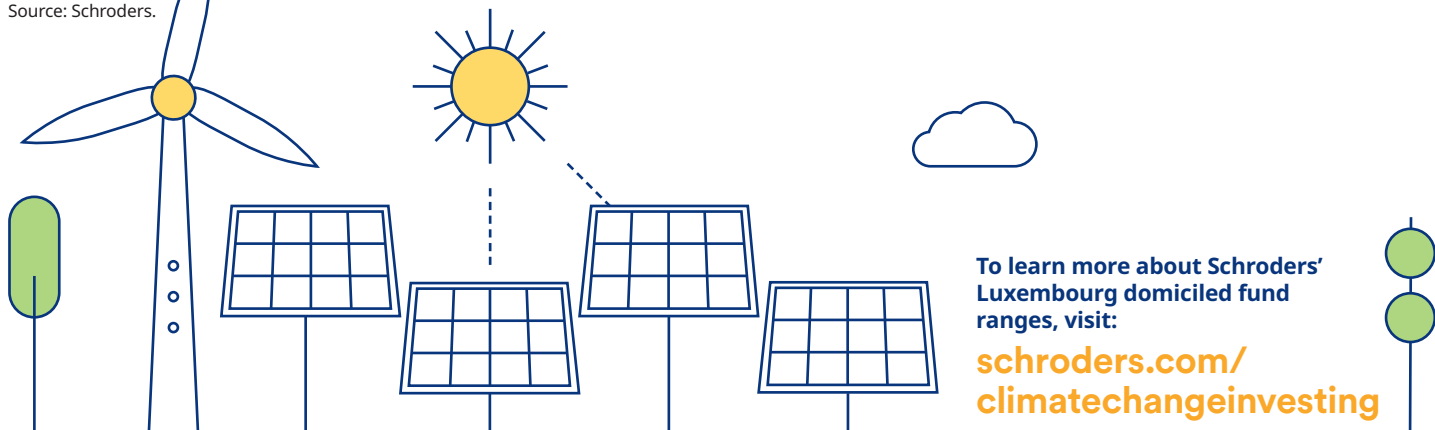
Source: Fitch Ratings, as at 6 August 2019.

Our unique process

Un processus d'investissement unique



Source: Schrodgers.



To learn more about Schrodgers' Luxembourg domiciled fund ranges, visit:

schrodgers.com/climatechangeinvesting

Risk Considerations

- The capital is not guaranteed
- Investments denominated in a currency other than that of the share-class may not be hedged. The market movements between those currencies will impact the share-class
- The fund will not hedge its market risk in a down cycle. The value of the fund will move similarly to the markets
- Changes in China's political, legal, economic or tax policies could cause losses or higher costs for the fund

Important information

This document does not constitute an offer to anyone, or a solicitation by anyone, to subscribe for shares of Schroder International Selection Fund (the "Company"). Nothing in this document should be construed as advice and is therefore not a recommendation to buy or sell shares.

Subscriptions for shares of the Company can only be made on the basis of its latest Key Investor Information Document and prospectus, together with the latest audited annual report (and subsequent unaudited semi-annual report, if published), copies of which can be obtained, free of charge, from Schroder Investment Management (Europe) S.A.

An investment in the Company entails risks, which are fully described in the prospectus.

Past performance is not a reliable indicator of future results, prices of shares and the income from them may fall as well as rise and investors may not get the amount originally invested.

Schroders has expressed its own views and opinions in this document and these may change.

Schroders will be a data controller in respect of your personal data. For information on how Schroders might process your personal data, please view our Privacy Policy available at www.schroders.com/en/privacy-policy or on request should you not have access to this webpage.

This document is issued by Schroder Investment Management (Europe) S.A., 5, rue Höhenhof, L-1736 Senningerberg, Luxembourg. Registered No. B 37.799. For your security, communications may be taped or monitored. Schroders Sustainability Accreditation: Our Schroders Sustainability Accreditation helps investors distinguish how ESG factors are considered across our products. The fund has been awarded an Integrated accreditation. ESG factors are embedded into the investment process and can be clearly evidenced. There is a strong commitment to stewardship and company engagement. The fund has been awarded a Sustainable accreditation. Sustainability is a cornerstone of the investment process. The fund aims to avoid controversial business practices. The fund has been awarded a Screened accreditation. The fund has additional stock/security restrictions beyond cluster munitions and anti-personnel mines. For further information about our For further information about our Schroders Sustainability Accreditation please visit www.schroders.lu/sustainabilityaccreditation. CS1750



EST. 1804

Schroder Investment Management Limited

1 London Wall Place, London EC2Y 5AU, United Kingdom

T +44 (0) 20 7658 6000

 schroders.com

 [@schroders](https://twitter.com/schroders)